



A PROUD & PROGRESSIVE  
VILLAGE FOR ALL PEOPLE

# VILLAGE NEWS

May/June 2015

Glendale Heights, Illinois

Linda Jackson, Mayor



## Fishing Derby

**Saturday, June 13 • 9:30 am to Noon**  
**Lake Becerra at Heritage Park**  
**Ages 15 and under with adult**

Grab your tackle box and your poles for a great day of fishing. The "catch and release" derby is designed to be buckets of fun with many chances to win prizes. The Village of Glendale Heights in conjunction with the Glendale Heights Fraternal Order of Police (FOP) will host this annual "fin-tastic" event, offering awards and prize packages to the heaviest catches.

Trophies will be awarded in the following age categories: 6 years & under, 7-10 years and 11-15 years. For details, please call 630.260.6060.



### Schedule

Registration  
9:30 am - 10:00 am

Fishing  
10:00 am - 11:30 am

Trophy Presentation  
11:45 am

Boat Rides  
12:00 pm - 2:00 pm



## Memorial Day

*Honoring America's Fallen Heroes*

On **Wednesday, May 20<sup>th</sup>**, area grade school students will be planting 6,845 flags to represent the fallen heroes from Operation Iraqi Freedom and Operation Enduring Freedom Afghanistan. The inner circle of flags will represent fallen Illinois service personnel.

On **Monday, May 25**—Memorial Day—at 11:00 am at Veterans Memorial Park, we honor the memory of the brave men and women who died while serving our country. The Glendale Heights VFW Post 2377 will conduct a "Fallen Warrior Ceremony" followed by a solemn wreath laying ceremony. This includes a flag and color guard presentation, rifle salute and playing of Taps.

## Charity Golf Classic

**Tuesday, June 16 • Glendale Lakes Golf Club**

Play some golf and help raise funds for worthwhile at the 2015 Charity Golf Classic!



This annual event has raised over \$300,000 for a number of different charities. This year's event will be raising money for Make-A-Wish Illinois, the FOP Lodge 52 Community Enrichment Fund, the Glendale Heights Chamber of Commerce Scholarship Fund and our largest recipient, Family in Faith Food Pantry.

If you would like to join us for golf and dinner on June 16th, be a hole sponsor or donate a raffle prize, please call the Glendale Lakes Golf Club at 630.260.0018 or Mayor Linda Jackson at 630.909.5303, and sign up today. Help us to make the 16th Annual Charity Classic another great success!

**Glendale Heights  
Police Department's**

# BIKE auction



**Saturday  
May 9**

**8:00 am Viewing  
9:00 am Auction**

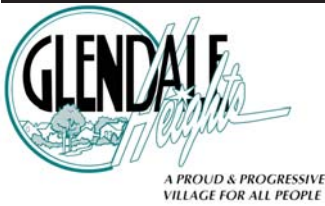
**Glendale Heights  
Public Works Parking Lot  
1615 Glen Ellyn Road  
Questions? 630.909.5412**

## Inside:

Center for Senior Citizens . . . . Page 5  
GH<sub>2</sub>O Aquatic Center . . . . . Page 12  
Glendale Heights Fest . . . . . Page 11

Glendale Lakes Golf Club . . . . . Page 6  
New Businesses . . . . . Page 14  
Parks, Recreation & Facilities . . Page 4

Police Department . . . . . Page 8  
Public Works Department . . . . Page 7  
Tax Talk . . . . . Page 10



# Letter from the Village President

300 Civic Center Plaza • Glendale Heights, IL 60139  
630.909.5303 • [ljackson@glendaleheights.org](mailto:ljackson@glendaleheights.org)



Dear Residents,

I am very proud of our entire Village Board, staff, committee and commission members, and our many dedicated volunteers for continuing to work together on common goals to ensure the Village of Glendale Heights continues to stay true to our motto of being "A Proud and Progressive Village for All People". Congratulations to Trustees Bill Schmidt, Michael Light and Pat Maritato for their recent re-election success!

The long awaited summer season is finally here which means the GH<sub>2</sub>O Aquatic Center will be opening at the end of the month. Mark your calendars for opening day on Saturday, May 23<sup>rd</sup> and don't forget to stop by the Sports Hub and purchase your pool passes between May 1<sup>st</sup> and May 15<sup>th</sup> for a special discounted rate. I'd also like to invite everyone to Veterans Memorial Park on Monday, May 25<sup>th</sup> at 11:00 am for a special Memorial Day Service as we honor America's Fallen Heroes. The Memorial Day Service will include a "Fallen Warrior Ceremony" presented by the Glendale Heights VFW Post 2377 along with a rifle salute, color guard presentation and playing of Taps.

I'm excited to report as of March 31, 2015, all Ash Trees on Village properties infected by the Emerald Ash Borer have been removed. This removal process was completed five years ahead of schedule, and through competitive bidding the Village saved nearly \$500,000 from the original projected cost. I want to thank the Village Board and staff for helping expedite this process and eradicating all of the infected Ash Trees on public property.

Please mark your calendars for the 16<sup>th</sup> annual Charity Golf Classic. This event is always a huge success and we'd love for it to continue to grow. The Glendale Heights Charity Golf Classic will be held on Tuesday, June 16<sup>th</sup> at Glendale Lakes Golf Club. Please contact Glendale Lakes Golf Club for more information and to sign up!

On behalf of the entire Village Board, thank you for your continued support! Please do not hesitate to call our offices if you have any questions or concerns at 630.909.5303, or stop by for our monthly Coffee with the Mayor and Board. I look forward to a wonderful summer filled with fun events and community programs!

Sincerely,

Linda Jackson, Village President

## Congratulations 2015 Re-Elected Village Officials



Bill Schmidt  
District 1 Trustee



Michael Light  
District 3 Trustee



Pat Maritato  
District 4 Trustee

## Coffee with the Mayor & Board

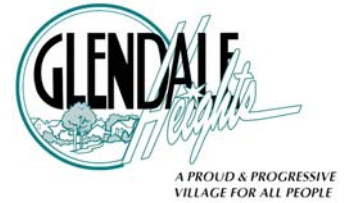
Do you have questions, concerns or suggestions for the Mayor and Board of Trustees?

Coffee with the Mayor & Board is held on the first Saturday of each month\* from 10:00 am to noon at the Center for Senior Citizens. **Coffee with the Mayor & Board is scheduled for May 2 and June 6.** If you are unable to attend and have a comment, suggestion or question, please call the Mayor's Office at 630.909.5303. \*Subject to Change



# Glendale Heights Village News

300 Civic Center Plaza • Glendale Heights, IL 60139  
630.260.6000 • [www.glendaleheights.org](http://www.glendaleheights.org)



## Flag Day

Sunday, June 14



Flag Day is celebrated on June 14. In honor of our "Red, White and Blue," the following tips for proudly displaying our U.S. flag are recommended by the National Flag Day Foundation:

- Hoist the flag briskly, and lower it ceremoniously.
- If you display the flag overnight, illuminate it.
- No other flag or pennant should be placed above or at the same level to the right of the U.S. flag.
- Don't allow the flag to touch anything beneath it, including the ground, water or the floor.
- When your flag fades or wears thin (typically after a year) replace it with a new one.
- Remember to dispose of the old flag in the Village's Flag Depository (located at the circular island in front of Village Hall) for proper military disposal.

The Flag Disposal Program was started in 2004 by Village Trustee Chester Pojack. As of March 20, 2015, a total of 5,037 flags have been collected. For information concerning the Flag Disposal Program, contact Village Trustee Chester Pojack at 630.909.5310.

## Emerald Ash Borer

The Village of Glendale Heights has aggressively removed Ash trees in the parkways, the parks and on public property. Unfortunately, all Ash trees must be removed because the Emerald Ash Borer has infested or will infest all of the trees.

The Village is asking residents to inspect their ash trees to determine if they have been infested. If your Ash tree is not yet dead or diseased, we request that you monitor it closely. Signs of Emerald Ash Borer infestation include:

- Branches at the top of the crown beginning to die
- "Suckers" of new young branches beginning to sprout from the trunk and base of the tree
- Vertical splitting of the tree bark
- Damage from woodpeckers that feed on the Emerald Ash Borer

If your tree is infested, it must be removed. The Village will work with residents to give adequate time to remove an infested tree, but must consider the safety of the public and property. Dead trees will begin to drop limbs or fall in heavy winds, and may cause injury or property damage. We also request that you prepare to remove your Ash tree when it begins to show signs of infestation rather than wait until it becomes a safety hazard.

## Glendale Heights Historic House

Open for tours on June 13, August 8 and September 12  
10:00 am - 1:00 pm • 311 Windy Point Drive

Step inside the front door and step back in time to the way things were 100 years ago, right down to the working pump on the kitchen sink, a wood burning stove in the kitchen, oil burning light fixtures and the player piano in the front parlor. The attached exhibit hall is devoted to the display of the history of Glendale Heights, from the original settlers who arrived in the 1830's, to the incorporation of the Village in 1959, and its growth and development over the past 50 years.

If you love the Victorian era, this is something you will want to experience. Bring the kids along to see the working train set and farm land exhibit and don't forget your camera. The Historic House is a wonderful "old place" in our community for everyone to enjoy!





# Parks, Recreation & Facilities Department

250 Civic Center Plaza • Glendale Heights, IL 60139

630.260.6060 • www.ghprf.com

## PATH Summer Camp "Hollywood"

### Camp Kinie: The Debutants

Entering Kindergarten in September 2015

Lights, Camera, Action! Camp Kinie is perfect for our youngest campers who are not quite old enough for regular summer camp. Campers will make new friends and memories that will last a lifetime. Fee includes 30-minute swim lesson four (4) days a week, weather permitting.

### PATH Summer Camp Stars (grades 1-2) Directors (grades 3-5)

This summer camp provides participants a way to stay busy with art projects, athletic activities and field trips. Includes a 30-minute swimming lesson Monday through Thursday, weather permitting. Fieldtrips are typically on Fridays.

### STEP Camp Producers (grades 6-8)

Participants develop leadership and social skills in our camp designed to foster self-discovery and multicultural understanding. Participants will focus on responsibilities such as leading camp activities and projects.

## Park Parties

Join us at your neighborhood park for some FUN and the opportunity to meet the Mayor and your District Trustee. Enjoy a free hot dog and ice cream as you play games and dance along with the Parks & Recreation staff.

Park Parties are from 5:30 pm - 7:00 pm.

### Park Party Schedule

- Monday, June 15 - Americana Park
- Monday, June 22 - Sidney Park
- Thursday, June 25 - Glen Hill Park
- Tuesday, June 30 - Ollman Park
- Monday, July 27 - Millennium Park
- Thursday, July 30 - Ringneck Park



### Summer Preschool (Ages 4-5)

Introduce your child to the preschool classrooms and preschool staff by enrolling in this fun summer preschool class. Children will explore preschool classrooms and have fun playing games, doing crafts, music, outdoor play and water park activities.

DAY	DATE	TIME	FEE (R/SDR/NR)
M/W	6/8-7/8	9:30 am - 11:30 am	\$165/\$175/\$185
TU/TH	6/9-7/9	9:30 am - 11:30 am	\$165/\$175/\$185



### Official Youth Skills Competition of Major League Baseball Sunday, May 3, 12:00 pm - 3:00 pm Nazos Park

Pitch, Hit & Run competition is intended to encourage youth participation and emphasize the "FUN" element of baseball competition. Since there is no registration fee for this program, every boy and girl, ages 7 - 14, will have a chance to compete. Players must submit a copy of a valid birth certificate for age verification. The four age groups are: 7-8, 9-10, 11-12 and 13-14 with boys and girls competing separately. All participants must fill out a registration/waiver form obtained from the Glendale Heights Parks, Recreation & Facilities Department.

# Glendale Heights Center for Senior Citizens

260 Civic Center Plaza • Glendale Heights, IL 60139

630.260.6050 • [www.glendaleheights.org/Seniors](http://www.glendaleheights.org/Seniors)



*Promoting "Fuller, Stronger, Longer Lives"*

## CENTER FOR SENIOR CITIZENS MEMBERSHIPS

If you are a resident of Glendale Heights, your annual membership to the Center is free! Non-residents can join for only \$25 per year. At the Glendale Heights Center for Senior Citizens, membership certainly does have its privileges. You will receive the quarterly Senior Newsletter mailed directly to your household and will be eligible to participate in an array of activities at the Center every day, including use of the library, game room and craft room. A membership also allows you access to use the walking track and walk the upstairs hall at the Sports Hub during the weekday hours. Bocce ball and lawn bowling is also available for members in the field house at the Sports Hub. Please see Center staff for more information.

Remember, memberships need to be renewed annually in person to be an active member at the Center for Senior Citizens!

## FOUR WINDS CASINO TRIP

June 1 • 8:00 am - 4:00 pm  
Cost: \$35 • Register by May 15



Experience the excitement at Four Winds Casino. The odds are in your favor when you play the hottest casino games in New Buffalo, Michigan. Package cost includes: \$15 instant slot credit and up to \$10 food credit.

## CHIP-IN CASINO

June 17 - 19 • 3 days/2 nights

Single - \$215

Double - \$150

Triple - \$145

Full payment due May 22

The Island Resort is located near Escanaba in the Upper Peninsula of Michigan. The hotel now features two towers of rooms with an indoor pool and sauna. Michigan allows Craps, Let it Ride, and table poker gaming along with slots and blackjack.



Summer is here and it's time to try a new color for your hair! Maybe a warm red or some highlights to brighten your face and make your hair look like it was kissed by the sun. Located in the Center for Senior Citizens, our stylists work with you to ensure that you look and feel your best from head to toe. The Salon offers services to men and women, ranging from cut and color, to manicures and pedicures.

### Salon Hours

Monday: 8:00 am – 5:00 pm  
Tuesday: 8:00 am – 2:00 pm  
Wednesday: 8:00 am – 7:00 pm  
Thursday: 8:00 am – 12:00 pm  
Friday: 8:00 am – 5:00 pm  
Saturday: 7:00 am – 12:00 pm

Call 630.260.6055 for an appointment.

\*Membership is not required

*Gift Certificates Available!*



# Glendale Lakes Golf Club

1550 President Street • Glendale Heights, IL 60139  
630.260.0018 • Banquets: 630.260.0095 • [www.glendalelakes.com](http://www.glendalelakes.com)  
Owned and operated by the Village of Glendale Heights

## 2015 Golf Season

Glendale Lakes Golf Club is open for the 2015 golf season. Book your tee times today by calling 630.260.0018 or online at [www.glendalelakes.com](http://www.glendalelakes.com).

## Upcoming Events

Mother's Day Brunch Buffet ~ May 10  
16th Annual Charity Golf Classic ~ June 16

## Golf Lessons

Glendale Lakes Golf Club offers individual and group golf lessons to children and adults. If you are new to the game or need to get a quick tune up, our instructors will help improve your golf game. To view a list of days and times for lessons, visit our website at [www.glendalelakes.com](http://www.glendalelakes.com) under Golf Instruction. To sign up for lessons, call the Golf Shop at 630.260.0018. Golf Clubs will be provided for lessons if needed.



## Mother's Day Brunch

Sunday, May 10 • 10:00 am to 2:30 pm

Glendale Lakes Golf Club will be hosting its annual Mother's Day Brunch! Brunch will include a carving and omelet station, various salads, breakfast and luncheon entrees, children's items and a sweets table.

Cost: \$29 for adults, \$14.50 for children ages 5-12 and children 4 and under are FREE.

Price includes tax and service charge.

Make a reservation for your family and that special Mom by calling Glendale Lakes Golf Club at 630.260.0095.

## Banquets & Weddings



Need to host a party and have no room in your home? Make it easy, and host your party at Glendale Lakes Golf Club. Glendale Lakes Golf Club has space to host parties from 20 to 250 people. We have several packages available to pick from that will keep you within your budget. To view our menus and packages, see our website at [www.glendalelakes.com](http://www.glendalelakes.com) under the Banquet and Wedding tabs.

## Glendale Lakes Golf Club

1550 President Street, Glendale Heights, IL 60139  
630.260.0018 • [www.glendalelakes.com](http://www.glendalelakes.com)

\$5 off any \$25 golf shop merchandise purchase in the Clubhouse

Restrictions Apply  
Offer good through 6/30/15



# Public Works Department

1615 Glen Ellyn Road • Glendale Heights, IL 60139  
630.260.6040 • [www.glendaleheights.org/Public\\_Works](http://www.glendaleheights.org/Public_Works)



## Water Pollution Control Facility

The Water Pollution Control Facility operates under provisions of the Illinois Environmental Protection Agency where the treatment of municipal wastewater is regulated by the Clean Water Act. Laboratory testing is performed daily by Village staff on process control, to verify concentration limits to meet the Village's permit.

Chlorine is added to water from May through October to remove harmful pathogens. Sodium Bi-Sulfite is applied as a de-chlorination chemical upon final discharge.

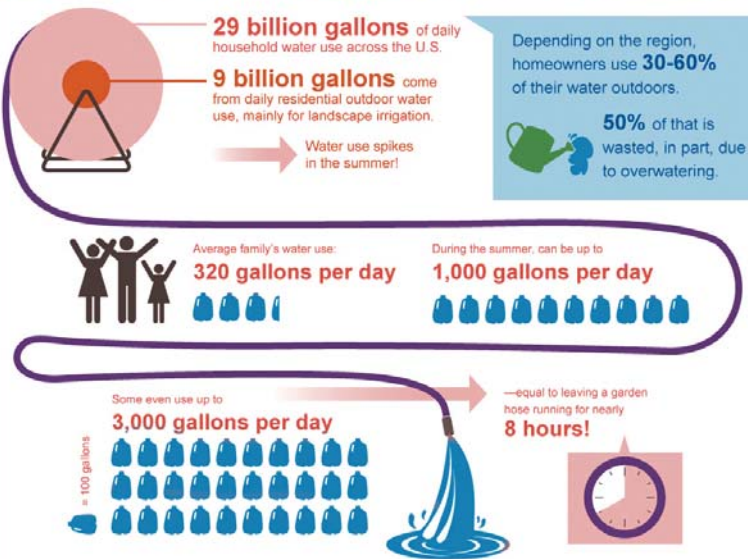
## Village Engineering

The Engineering Division of Public Works provides engineering support to other departments in the Village as well as external parties. The Division is currently focused on the summer construction period. In part, this involves performing detailed engineering reviews on incoming building applications from private businesses, citizens, and Village projects.

Summer is here and with it some major road construction projects. This summer, Darlene Lane, Pleasant Avenue and Lynn Court will be worked on as part of a Community Development Block Grant (CDBG) project. The Division is also preparing for construction oversight on other road projects, including the 2015 Motor Fuel Tax (MFT) road project. Staff also upholds all local state and federal mandates, including storm water management compliance to new construction sites and ensures projects comply with the Village Code.

## SAVE WATER IN THE YARD THIS SUMMER

As temperatures rise in the summer, so does our outdoor water use, mostly on lawns and landscapes.



### Simple Things We Can All Do

- Step on it:** Step on the lawn: if the grass springs back, it doesn't need water.
- Leave it long:** Longer grass promotes a more drought-resistant lawn, reduced evaporation, and fewer weeds.
- Take a sprinkler break:** Grass isn't really meant to be bright green in the summer.

## Village Fleets

At the beginning of this month, the Fleets Division will complete the decommissioning of all snow removal and salting equipment, signaling the completion of the winter season. It was a very long winter maintaining the snow equipment, thus allowing our village streets to remain clear.

During this time of the year, The Fleets Division is kept busy maintaining all of the equipment used to maintain all of the Village parks, ballfields, parkway trees and other land. Fleets is also busy maintaining and repairing all of the equipment used for road repairs.

## Volunteers Wanted!

The Village of Glendale Heights is seeking volunteers that wish to be involved in storm drain stenciling. Storm drain stenciling is a fun way to get a group of friends, scouts, club members, neighbors and co-workers together while spending time outside. You can spend as much or as little time as you have. It's so simple and flexible. The Public Works Department supplies everything you need at no charge to you and all we ask is that you fill out a form to tell us the number of drains stenciled, what you found there and how many friends you got together. Drain maps are available. For more information, please contact Public Works at 630.260.6040.



# Glendale Heights Police Department

300 Civic Center Plaza • Glendale Heights, IL 60139  
Emergency Help: 911 • Non-Emergency: 630.260.6070  
[www.glendaleheights.org/policedept](http://www.glendaleheights.org/policedept)

## Crossing Guard Appreciation Day

Tuesday, May 5



School Crossing Guards play an important role in the lives of children who walk or bicycle to school. Most notably, they help the students of School Districts 15 and 16 safely cross streets at key locations, working hard to protect our children each and every school day.

These dedicated individuals serve as an integral part of our community in many ways and are often overlooked by the public. Crossing Guards serve to remind motorists to be aware of children in and around school zones and help parents feel more comfortable about their children walking or bicycling to school. They are required to possess a deep sense of responsibility and common sense, have a good rapport with children, and brave extreme weather conditions throughout the school year.

We invite the entire community to recognize the significant contribution of these individuals and remember their efforts to ensure a safe journey for our school children each day of the school year.

### 2014/2015 School Crossing Guards:

Janice MacLean	Walter Johnson
Vicki Riese	Donna Caswick
Cheryl Schilke	Beverly Pappas
Pam Timar	Ruth Hospes
Lee Walper	Dina Taege
Lorena Palonis	Fredrick Martinez
Rosemary Robinson	

## National Police Week 2015

Sunday, May 10 - Saturday, May 16

In 1962, President Kennedy proclaimed May 15th as National Peace Officers Memorial Day and the calendar week in which May 15th falls, as National Police Week. Established by a joint resolution of Congress in 1962, National Police Week pays special recognition to those law enforcement officers who have lost their lives in the line of duty for the safety and protection of others.

National Police Week 2015 will run from Sunday, May 10th through Saturday, May 16th. To commemorate that week, the Glendale Heights Police Department will be handing out blue ribbons for residents to put on their vehicles as a symbol of respect to those who have laid down their lives in the line of duty and to show support to law enforcement officers protecting our streets. May 15th is National Peace Officers Memorial Day and we especially hope you'll fly the ribbons on that day as we honor those who have made the ultimate sacrifice. Blue ribbons will be available at the Police Department Records Division beginning May 1st.



National Police Week 2015 will run from Sunday, May 10th through Saturday, May 16th. To commemorate that week, the Glendale Heights Police Department will be handing out blue ribbons for residents to put on their vehicles as a symbol of respect to those who have laid down their lives in the line of duty and to show support to law enforcement officers protecting our streets. May 15th is National Peace Officers Memorial Day and we especially hope you'll fly the ribbons on that day as we honor those who have made the ultimate sacrifice. Blue ribbons will be available at the Police Department Records Division beginning May 1st.

## Junior Police Academy

Ages 11 to 14 • June 15 - 19

8:00 am to 4:00 pm • \$85/\$105 (Resident/Non-resident)

The Glendale Heights Police Department is once again conducting a Junior Police Academy camp! Run by members of the Police Department, this is a fun-filled camp that combines both educational and recreational activities. The program has been a huge success in the past and truly enjoyed by all who have participated. Registration is accepted on a first-come, first served basis, so be sure to enroll early! To register for the Junior Police Academy, or for more information on the program, contact the Glendale Heights Sports Hub at 630.260.6060 or [www.GHPRF.com](http://www.GHPRF.com).

## Safety Town Classes

Ages 5 to 7 • June 22 - 26, July 13 - 17, July 20 - 24

9:00 am - 11:00 am • \$15/\$30 (Resident/Non-resident)

As adults, we do all we can to keep our children safe. Teaching safety awareness to our children when they are young is very important in our efforts to protect these precious lives.

A variety of educational topics are covered, including Pedestrian, Railroad, Fire, Bus and Bike Safety, as well as Stranger Danger, First Aid & Poisons, Emergency 9-1-1 and Seat Belt Use. The children will receive a Safety Town T-shirt and be provided hand out materials daily. For registration information and session dates, contact the Glendale Heights Sports Hub at 630.260.6060 or [www.GHPRF.com](http://www.GHPRF.com).







## Bear Down on Bullies!

Monday, May 18 • 4:30 pm • Sports Hub Gym • FREE

The Village of Glendale Heights Police Department, the Glendale Heights Sports Hub and the Glenside Public Library District are hosting "Bear Down on Bullies", an informative, hands-on, anti-bullying show created by Staley Da Bear, the official team mascot of the Chicago Bears! Staley and his emcee will jump start the desire to get along with each other and live in a more friendly and welcoming environment by combining education, comedy and super cool prizes into this high energy show!



## Clothes Dryer Fires

By the Glenside and Bloomingdale Fire Protection Districts

Clothes dryers are among the most common types of equipment that cause fires in the home. Lack of cleaning and maintenance is the leading cause of dryer fires. Dust, fiber and lint are often the first material ignited in these fires. To avoid such fires the National Fire Protection Association advises:

- Clean the lint filter before and after each use, and wipe away lint that has accumulated around the drum.
- Make sure the dryer is plugged into an outlet suitable for its electrical needs.
- Do not run the dryer without a lint filter.
- Do not leave the dryer running if you go out, in case of malfunctions.
- Make sure that the exhaust pipe is unobstructed and the outdoor vent flap opens readily.
- Keep combustibles, such as boxes and clothing, away from the dryer.
- Have your dryer installed and serviced by a professional. A professional should inspect gas dryers periodically in order to insure that the gas line and connection are intact and leak-free.

If you have any questions or concerns please feel free to contact the Glenside Fire Protection District at 630.668.5323 or the Bloomingdale Fire Protection District at 630.894.9080.

## House/Garage Sale Permits

Homeowners are reminded that per Village Ordinance a permit is required to hold a House or Garage sale. A fee of \$10 is collected at the time of the application, along with homeowner's signed Permit Consent form. Questions? Call 630.260.6000.

## Bike Registration

The Glendale Heights Police Department recovers dozens of bicycles that are not returned due to the inability to identify the owners. We would like to take the opportunity to invite residents to register their bicycles at the Glendale Heights Police Department. This service is free and may help recover your lost bike to you! Questions? Call 630.260.6070.

## Crimes Against Children

Recent headlines regarding crimes against children, although a rare occurrence, have left many parents frightened and unsure about how best to protect their children. It is important that parents be aware and alert, but you and your child do not need to be afraid.

- Teach your child to run away from danger, never towards it
- Never let your child go anywhere alone
- Know where and with whom your child is with at all times
- Talk openly to your child about safety
- Practice what-if scenarios with your child
- Teach your child a stranger is anyone you don't know
- Never go anywhere with a stranger
- If someone grabs your child teach your child to yell, "This is not my mom/dad"
- If confronted by a stranger your child should run to a crowded area
- Make sure your child walks to school with friends. Never walk alone
- Remind your child you will never have anyone pick them up, unless prior arrangements have been made



\*For more information and other great topics, please visit The National Center for Missing and Exploited Children at <http://www.missingkids.com/Safety>



# Glendale Heights Finance Department

300 Civic Center Plaza • Glendale Heights, IL 60139  
630.909.5342 • www.glendaleheights.org

## Tax Talk

The DuPage County Treasurer's Office will have already mailed out tax bills to all residents and businesses at the end of April. A common and recurring misconception is that all of the tax money collected from taxpayers in Glendale Heights comes directly back to Village coffers.

The Village is one of many taxing bodies that make up your total tax bill. On average, only about 10.2% of the taxes billed come back to the Village, while the remaining 89.8% go to all the other taxing districts, with Schools receiving the majority share of that (74.1%). The Village Board has worked very hard to keep property tax levies at responsible levels, and despite declines in Equalized Assessed Values since 2008, the Village's total tax levy for 2014 is LESS than it was in 2009.

Budget information for fiscal year 2015/2016 will be available soon for review on the Village website. If you have questions regarding the budget, taxes or Village finances, please contact the Finance Department at 630.909.5342.

### Typical Tax Bill

Rate 2012	Tax 2012	Taxing District	Rate 2013	Tax 2013
.1160	74.66	** COUNTY **	.1226	73.43
.0250	16.09	COUNTY OF DU PAGE	.0265	15.87
.0382	24.58	PENSION FUND	.0396	23.72
.0137	8.81	COUNTY HEALTH DEPT	.0153	9.14
.1432	92.17	PENSION FUND	.1533	91.82
.0110	7.08	FOREST PRESERVE DIST	.0124	7.42
.0168	10.81	PENSION FUND	.0178	10.66
		DU PAGE AIRPORT AUTH		
		** LOCAL **		
NO LEVY		DU PAGE WATER COMM	NO LEVY	
.0952	61.28	BLOOMINGDALE TWP	.1060	63.49
.1031	66.36	BLOOMINGDALE TWP ROAD	.1147	68.78
.6390	411.32	VLD OF GLENDALE HTS	.7123	426.66
.4978	329.43	PENSION FUND	.5552	332.55
.5272	339.35	BIRMINGHAM FI-EX BBS	.5656	341.19
.0850	54.71	PENSION FUND	.1146	68.64
.0340	21.88	BLOOMINGDALE FI D BD	.0395	23.66
.4463	287.28	GLENSIDE LIBR DIST	.5581	334.30
.0445	28.64	PENSION FUND	.0489	29.29
		** EDUCATION **		
5.0043	3,221.26	GRADE SCHOOL DIST 19	6.1048	3,656.77
.3611	232.44	PENSION FUND	.2835	169.81
2.2186	1,428.11	HIGH SCHOOL DIST 87	2.4286	1,454.73
.0682	43.90	PENSION FUND	.0591	35.40
.2681	172.68	COLLEGE DU PAGE 502	.2956	177.16
		TOTAL		
10.7563	6,923.84		12.3780	7,414.44

The Village is one of many taxing bodies that make up your total property tax bill.

**Mail To:**

**Property Location:**

**Township:**

**Tax Code:** 2095

**Property Index Number:**

**Back Taxes:** NO

TIF Frozen Value	
Fair Cash Value	197,700
Land Value	16,310
+ Building Value	49,590
= Assessed Value	65,900*
x State Multiplier	1.0000
= Equalized Value	65,900
- Residential Exemption	6,000
- Senior Exemption	
- Senior Freeze	
- Disabled Veteran	
- Disability Exemption	
- Returning Veteran Exemption	
- Home Improvement Exemption	
- Housing Abatement	
= Net Taxable Value	59,900
x Tax Rate	12.3780
= Total Tax Due	7,414.44

\* S OF A FACTOR .93650  
 1st INST PAID MAY 22, 2014  
 2nd INST PAID AUG 27, 2014

2013 DuPage County Real Estate Tax Bill  
 Gwen Henry, CPA, County Collector  
 421 N. County Farm Road  
 Wheaton, IL 60167  
 Office Hours - 8:00 am - 4:30 pm, Mon-Fri  
 Telephone - (630) 407-5900

## CAFR Award

The Village proudly announces that for the 32<sup>nd</sup> consecutive time, it has been awarded with a Certificate of Achievement for Excellence in Financial Reporting for its 2014 Comprehensive Annual Financial Report (CAFR) by the Government Finance Officers Association (GFOA). The Certificate of Achievement is the highest form of recognition in the area of governmental accounting and financial reporting, and its attainment represents a significant accomplishment by a government and its management.

The CAFR has been judged by an impartial panel to meet the high standards of the program including demonstrating a constructive "spirit of full disclosure" to clearly communicate its financial story and motivate potential users and user groups to read the CAFR. The GFOA is a nonprofit professional association serving approximately 17,500 government finance professionals with offices in Chicago, IL and Washington, D.C.

A copy of the 2014 CAFR can be viewed online under the Finance Department page of the Village website, or a copy can be obtained at the Office of Finance at Village Hall.



# Glendale Heights Fest 2015

300 Civic Center Plaza • Glendale Heights, IL 60139  
630.260.6000 • [www.glendaleheights.org/GH\\_Fest](http://www.glendaleheights.org/GH_Fest)



## Wristbands\*

Save \$5 on a regular \$25 one-day wristband. Advanced daily pre-sale wristband vouchers are available starting Monday, June 1 through Wednesday, July 8. One \$20 wristband is valid for unlimited rides on one of the following days and times: Wednesday, Thursday, or Friday from 6:00 pm to close, or Saturday and Sunday from 3:00 pm - 7:00 pm.

Pre-sale wristband vouchers can be purchased at the following Glendale Heights locations: Village Hall, Center for Senior Citizens or the Sports Hub.

\*Not responsible: If lost or stolen, mechanical breakdowns or failure, weather conditions, or height restrictions. No duplications accepted. No cash value. No refunds. No rain checks. No exceptions. Certain rides have height restrictions. The new attraction "Speed" ride will require two additional tickets - even with a Wristband and/or Mega Pass.

## Mega Pass\* - Pre-Sale Only

Purchase your Mega Pass card (\$70) for unlimited rides all 5 days - from open until close Wednesday through Saturday and from open until 7:00 pm on Sunday. Every Mega Pass holder will be required to take a picture for a Mega Pass Photo ID Card (Mega Passes are non-transferable).

Mega Passes are only available for purchase at the Glendale Heights Sports Hub located at 250 Civic Center Plaza from June 1 through July 8.



## Print at Home

New this year, buy and print your tickets at home! Avoid the long lines and buy and print your tickets and wristband vouchers before coming. Visit [www.glendaleheights.org/GH\\_Fest](http://www.glendaleheights.org/GH_Fest) for more information!

## Glendale Heights Fest 2015 Schedule

**Wednesday, July 8**  
6:00 pm to 11:00 pm

Wristbands honored 6:00 pm - 11:00 pm  
6:00 Opening Ceremonies  
6:30 Frost Entertainment  
7:00 Jack Flash  
8:00 And Beyond  
**9:30 FIREWORKS**  
9:45 And Beyond

**Thursday, July 9**  
6:00 pm to 11:00 pm

Wristbands honored 6:00 pm - 11:00 pm  
6:00 Frost Entertainment  
6:30 Jaded State  
8:00 Gina Glocksen

**Friday, July 10**  
6:00 pm to Midnight

Wristbands honored 6:00 pm - Midnight  
6:00 Frost Entertainment  
6:30 Line Dancing  
7:00 Lucky Town  
9:00 Back Country Roads

**Saturday, July 11**  
3:00 pm to Midnight

Wristbands honored 3:00 pm - 7:00 pm  
3:00 Frost Entertainment  
6:30 Seven Soul  
8:30 Infinity

**Sunday, July 12**  
3:00 pm to 11:00 pm

Wristbands honored 3:00 pm - 7:00 pm  
3:00 Frost Entertainment  
5:30 Green 13  
8:30 Generation Sixties  
**9:30 FIREWORKS**  
10:00 Generation Sixties





# Glendale Heights Aquatic Center

240 Civic Center Plaza • Glendale Heights, IL 60139

630.260.6060 • www.ghprf.org



## GH<sub>2</sub>O Opening Weekend

May 23 - May 25 (Memorial Day Weekend)  
Noon - 7:00 pm

## Regular Season Hours

May 30 - August 16

Monday through Friday  
Noon - 8:30 pm

Saturday and Sunday  
Noon - 7:00 pm

Daily Rate for Residents is \$6  
Daily Rate for Non-residents is \$12  
Children under 3 are free

Proof of residency is required to receive resident rate  
\*No refunds on daily fees

## SAVE *the* DATE

### Dolphins Swim Team Registration

Register before May 16<sup>th</sup>  
for discounted rates!

### Special Events

- Father's Day (Dads swim free!) - June 21
- 4th of July Celebration - July 4
- Fiesta Day - July 18
- Flow Rider Competition - August 2
- Boat Races - August 9

## GH<sub>2</sub>O Membership Benefits

- Priority entrance - 11:30 am
- Discount on swim lessons
- Discount on swim team registration
- Surf Club (available to members only)
- Discounts on pool rentals/ birthday parties



## EARLY BIRD

special discounted rates

Rates for Membership Purchased between May 1 - 15



Individual	\$35/\$40/\$45
------------	----------------

Senior Citizen	\$15/\$20/\$25
----------------	----------------

Above rates are listed  
Resident/School District Resident/  
Non-Resident

Rate structure has changed for the 2015 season! All pool passes will be purchased at a single pool pass rate, regardless of number of individuals purchasing in a given household.

**Proof of residency is required**

### Regular Season Membership Rates (After May 15)

Individual	\$43/\$48/\$58
------------	----------------

Senior Citizen	\$20/\$25/\$30
----------------	----------------

Above rates are listed  
Resident/School District Resident/  
Non-Resident

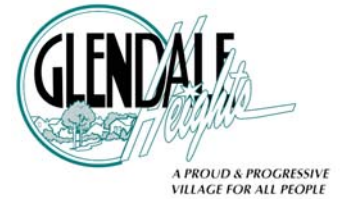
Rate structure has changed for the 2015 season! All pool passes will be purchased at a single pool pass rate, regardless of number of individuals purchasing in a given household.

Proof of residency is required.

There is a \$5.00 fee to reprint pool passes.  
Family passes from last year will still work after membership is renewed!

# Glendale Heights Village News

300 Civic Center Plaza • Glendale Heights, IL 60139  
630.260.6000 • [www.glendaleheights.org](http://www.glendaleheights.org)



## Village Vehicle Stickers

The 2015-16 Village vehicle stickers are sold at Village Hall at the Administrative Services counter beginning in May. The new vehicle sticker must be displayed by 12:01 am, July 1st, 2015 on the lower right hand corner of the windshield. Passenger vehicle stickers are \$15, motorcycle tags are \$12, recreational vehicle stickers are \$18, and trucks with B plates are \$25. There is an additional price schedule for trucks based on their individual weights. Qualifying senior citizens receive one sticker at no charge.

Per Village Ordinance, overnight parking on Village streets is restricted to those vehicles having a valid vehicle sticker.

### Sticker Purchase: By Mail

If you bought one or more sticker(s) last year, the Village will mail you a pre-printed renewal application during the first week of May. If you receive a pre-printed renewal application, you'll be able to conveniently purchase your sticker either by mail or at Village Hall. If you have purchased a new vehicle with a new license plate, you must include a copy of your license plate registration with your renewal application.

If you have not received a pre-printed form in the mail, you are required to provide proof of your State Vehicle Registration indicating your Glendale Heights address at time of purchase. Failure to provide proof of residency of a Village address will result in sticker costs to be doubled. Adequate proofs of residency include a driver's license, utility bill or lease. Exceptions are made for residents who bring home a business vehicle. Residents are required to bring a letter on company letterhead indicating to whom the vehicle is assigned with resident's home address.

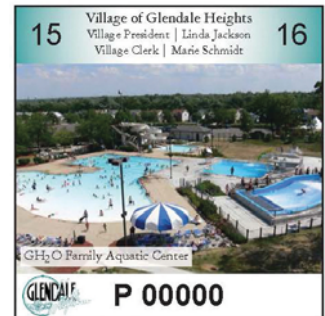
### Sticker Purchase: In Person

If you'd rather buy your new sticker(s) in person instead of by mail, or need to provide your proof of residency, you can do so at Village Hall during regular business hours, Monday through Friday, between 8:00 am and 4:30 pm, and Thursday evenings until 7:00 pm. For your convenience, Village Hall will be open on Saturdays in June from 9:00 am to noon.

### Late Payment Penalty

- A \$10.00 penalty will be charged if application is received after the deadline date of June 30th.
- A \$20.00 penalty will be charged if application is received after the deadline date of July 31st.
- A \$30.00 penalty will be charged if application is received after the deadline date of August 31st.

**It is strongly recommended to purchase your stickers early to avoid long lines and penalties.**



## Dog & Cat License/Tag

The Village of Glendale Heights by Ordinance requires that the owner of any dog or cat above the age of six months, kept or housed within the Village to be licensed and wearing the license/tag at all times. The biggest benefit of registering your pet with the Village of Glendale Heights is the increased chance of being reunited with your dog or cat, should it become lost. Applying for the license also serves as a reminder to renew your pet's annual rabies vaccination, which could save the pet's life.

The application must be made through the Administrative Services counter of the Village Hall (300 Civic Center Plaza), after the dog or cat attains the age of six months. The license fee is \$5.00 and is valid for one year from the issue date of the license. Annually, a new tag must be obtained within ten days of your animal receiving its current rabies tag.

Should you have any questions regarding the application process, you may call 630.260.6000 or visit the Glendale Heights website at [www.glendaleheights.org/AdminServices/animal\\_licenses.html](http://www.glendaleheights.org/AdminServices/animal_licenses.html).

## Now Hiring at the Village of Glendale Heights

Join the Glendale Heights team today! The Village of Glendale Heights is now hiring for a variety of positions at the Glendale Lakes Golf Club and with the Glendale Heights Parks, Recreation and Facilities Division. Positions range from waitstaff and banquet server at the Glendale Lakes Golf Club to Aquatic Facility Coordinator at GH<sub>2</sub>O Aquatic Center and Seasonal Youth Program Counselors at the Sports Hub. Gain valuable experience and make friends for a lifetime working for the Village of Glendale Heights. For more information, please visit [www.glendaleheights.org](http://www.glendaleheights.org) or contact Human Resources at 630.909.5357.





# Glendale Heights Village News

300 Civic Center Plaza • Glendale Heights, IL 60139  
630.260.6000 • [www.glendaleheights.org](http://www.glendaleheights.org)

## NEW BUSINESSES

<b>Allstate Express Trucking</b> 630.546.8251 Transportation Services	<b>My Pita Grill</b> 365 E. North Ave 630.765.7666 Middle Eastern Fast Food
<b>Mabuhay Restaurant</b> 1232 Bloomingdale Road 630.345.0073 Filipino & Asian Food	<b>Trend Tile, Inc.</b> 158 North Brandon Dr. 630.307.7427 Retail Design Center
<b>Yasmar, Inc</b> 2051 Bloomingdale Road 630.407.4366 Tax Preparation & Immigration Services	
<b>Support Glendale Heights' Businesses - Shop Local!</b>	

## Looking Ahead!

- June 27** - Skate Jam
- July 8 - 12** - Glendale Heights Fest
- August 4** - National Night Out
- August 8** - Historic House Tour
- August 22** - Community Garage Sale

## CHARACTER COUNTS!

The Glendale Heights CHARACTER COUNTS! Coalition would like to share with our community that the pillar for the month of May is Caring; Be kind • Be compassionate and show you care • Express gratitude • Forgive others • Help people in need.

The pillar for the month of June is Citizenship; Do your share to make your school and community better • Cooperate • Get involved in community affairs • Stay informed • Vote • Be a good neighbor • Obey laws and rules • Respect authority • Protect the environment • Volunteer.

Our future generation of leaders may not always listen to what we say, but they are watching what we do. Live by the "Six Pillars of Character" - T. (Trustworthiness) R. (Respect) R. (Responsibility) F. (Fairness) C. (Caring) C. (Citizenship).

For more information on CHARACTER COUNTS! contact Tanya Macko at 630.909.5459 or [Tanya\\_Macko@glendaleheights.org](mailto:Tanya_Macko@glendaleheights.org).

## New Kiwanis Club in Glendale Heights

A new Kiwanis Club is being formed in Glendale Heights that will bring community minded individuals together for the purpose of providing greater support and opportunities to children and youth.

Kiwanis Clubs sponsor many youth organizations that encourage leadership, community service and academic growth, such as Key Clubs and Builders Clubs as well as programs to encourage reading and improving grades. Kiwanis Clubs provide support and helping hands for many community projects through fund raising and volunteering. They join other people who want to make their community a better place to live while making life long friendships.

### What should you do?

- Find out more about Kiwanis by going to the Kiwanis website at [www.kiwanis.org](http://www.kiwanis.org)
- Save the 2nd and 4th Thursday mornings starting in May and plan to attend a meeting at the Glenside Library at 7:30 am
- Call Penny Linneweh at 630.790.1545 to attend a meeting and learn more about the Glendale Heights Kiwanis Club

## Read to the Rhythm

At the Glenside Public Library District



Children, teens and adults can join "Read to the Rhythm", the library's summer reading program beginning Monday, June 1. Register at the library on June 1 and receive an ice cream treat. Prizes for reading will be awarded until Friday, July 31. Everyone who finishes the summer reading program will be invited to an end-of-summer pool party at the GH<sub>2</sub>O Aquatic Center on Saturday, August 8 from 7:30 pm – 9:30 pm (rain date: 8/9).

## Refuse/Recycling Holiday Collections

In observance of the Memorial Day Holiday, there will be a one-day service delay for the collection of waste & recycling, in accordance with regular collection schedules.

For service related questions, please call Republic Services at 847.981.0091.

## Glendale Heights Foundation

The Glendale Heights Foundation (GHF) is a non-profit organization incorporated in 2003 to provide limited one-time emergency financial assistance to Village residents. All assistance requests must be submitted in writing, including name, address, details about the emergency circumstances, and financial assistance requested. Also, a GHF form can be downloaded from the Village website at [www.glendaleheights.org/GenInfo/organizations](http://www.glendaleheights.org/GenInfo/organizations). Send requests to: Glendale Heights Foundation, P.O. Box 5280, Glendale Heights, IL 60139 or call Allana Zeiss at 630.668.9409. Tax deductible donations are always welcome and graciously accepted.

## \$2,000 Sue Dees Memorial Scholarship

The Glendale Heights Junior Woman's Club will be awarding a \$2,000 Scholarship for the 2015-2016 school year in memory of one of their members, Susan E. Dees. Sue was an active member of the club for many years and she lost her battle to breast cancer in August 2005.

Applications will be accepted from female residents of Glendale Heights that are currently enrolled or will be enrolled as a full time student in college in the fall of 2015. Scholarship applications and transcripts must be postmarked by May 15, 2015. The scholarship will be awarded at the club's monthly meeting on June 3, 2015. For more information, please contact Karen Means at 630.647.1797 or [kmeans71@yahoo.com](mailto:kmeans71@yahoo.com).

## Chamber of Commerce Scholarship Program



The Glendale Heights Chamber of Commerce is proud to announce that for the 16<sup>th</sup> year, it will be assisting a number of individuals as they work their way towards a higher education by offering various scholarships.

The Kathy Guzlus Scholarships, established in 2000 will consist of scholarships totaling \$3,000. These scholarships are for high school seniors going to college that have shown strong leadership, volunteerism and academics in high school. In addition to the Kathy Guzlus Scholarships, two additional scholarships are available. A scholarship is also available for a child of a service member on active duty or a service person that recently left the military and is planning on a post-secondary education as well as a scholarship for a student who has completed two years of post-secondary education and is excelling in their given area of study.

In order to be considered for a scholarship, applicants must be a resident of Glendale Heights or have a guardian/parent whose organization is a member of the Glendale Heights Chamber of Commerce in good standing. Application deadline is May 15, 2015. For applications, please visit the website at: [www.glendaleheightschamber.com](http://www.glendaleheightschamber.com). For additional information, please contact the Chamber of Commerce Office at 630.909.5361.

## Village Meetings

Regularly scheduled meetings are held at the Civic Center, unless otherwise noted. Call the Village Hall at 630.260.6000 for more information.

### Appearance Commission

2<sup>nd</sup> Tuesday of each month, 6:15 pm

### Board of Police Commissioners

2<sup>nd</sup> Wednesday of each month, 7:00 pm

### CHARACTER COUNTS! Coalition

3<sup>rd</sup> Wednesday of each month, 7:30 am  
Glenside Public Library  
25 East Fullerton Avenue

### E.S.D.A.

#### (Emergency Services & Disaster Agency)

1<sup>st</sup> Wednesday of each month, 7:00 pm

### Founders' Day Committee

2<sup>nd</sup> Monday of each month, 4:30 pm

### Golf Course Committee

2<sup>nd</sup> Thursday, 7:00 pm  
(Jan., April, June, Sept., Nov.)  
Glendale Lakes Golf Club  
1550 President Street

### Historical Committee

1<sup>st</sup> Monday of each month, 7:00 pm  
Glendale Heights Historic House  
Windy Point Drive & Paul Avenue

### Neighborhood Watch

4<sup>th</sup> Wednesday of each month, 7:30 pm

### Plan Commission

2<sup>nd</sup> & 4<sup>th</sup> Tuesday of each month, 7:00 pm

### \*Village Board and Committee of the Whole Meetings (C.O.W.)

1<sup>st</sup> & 3<sup>rd</sup> Thursday of each month, 7:30 pm  
\*No Board or C.O.W. Meetings in July

### Youth Commission

2<sup>nd</sup> Wednesday of each month, 7:30 am  
Glendale Lakes Golf Club  
1550 President Street

\* The Village Board & C.O.W. meetings may be viewed the day following the meeting at 1:00 pm and 6:00 pm on GHTV (channel 6 for Comcast & W.O.W, channel 99 for AT&T) or on YouTube at [www.youtube.com/GlendaleHtsTV](http://www.youtube.com/GlendaleHtsTV).

# Village of Glendale Heights

300 Civic Center Plaza  
 Glendale Heights, IL 60139  
[www.glendaleheights.org](http://www.glendaleheights.org)

## ECRWSS RESIDENTIAL AND BUSINESS POSTAL CUSTOMER

PRST STD  
 U.S. POSTAGE  
**PAID**  
 Carol Stream, IL  
 PERMIT NO. 103

### Civic Center Hours

Monday, Tuesday, Wednesday	8:00 am – 4:30 pm
Thursday	8:00 am – 7:00 pm
Friday	8:00 am – 4:30 pm
Saturday, Sunday	Closed

### Village Contact Information

#### MAYOR & BOARD

Linda Jackson, Village President	<a href="mailto:ljackson@glendaleheights.org">ljackson@glendaleheights.org</a>	630.909.5302
Marie Schmidt, Village Clerk	<a href="mailto:marie_schmidt@glendaleheights.org">marie_schmidt@glendaleheights.org</a>	630.909.5333
Bill Schmidt, Trustee District 1	<a href="mailto:bschmidt@glendaleheights.org">bschmidt@glendaleheights.org</a>	630.909.5307
Sharon Fonte, Trustee District 2/Deputy Mayor	<a href="mailto:sfonte@glendaleheights.org">sfonte@glendaleheights.org</a>	630.909.5306
Michael Light, Trustee District 3	<a href="mailto:milight@glendaleheights.org">milight@glendaleheights.org</a>	630.909.5308
Pat Maritato, Trustee District 4	<a href="mailto:pmaritato@glendaleheights.org">pmaritato@glendaleheights.org</a>	630.909.5309
Chester Pojack, Trustee District 5	<a href="mailto:cpojack@glendaleheights.org">cpojack@glendaleheights.org</a>	630.909.5310
Mary Schroeder, Trustee District 6	<a href="mailto:mschroeder@glendaleheights.org">mschroeder@glendaleheights.org</a>	630.909.5311

#### VILLAGE OFFICES

Administrative Services	630.260.6000
Center for Senior Citizens	<a href="mailto:seniors@glendaleheights.org">seniors@glendaleheights.org</a> 630.260.6050
Community Development	<a href="mailto:comdev@glendaleheights.org">comdev@glendaleheights.org</a> 630.260.6030
Glendale Lakes Golf & Pro Shop	<a href="mailto:glendalelakes@glendaleheights.org">glendalelakes@glendaleheights.org</a> 630.260.0018
Glendale Lakes Golf Club, Restaurant & Banquets	630.260.0095
Parks, Recreation & Facilities	<a href="mailto:parks_recreation@glendaleheights.org">parks_recreation@glendaleheights.org</a> 630.260.6060
Police, Non-emergency	<a href="mailto:police@glendaleheights.org">police@glendaleheights.org</a> 630.260.6070
Public Relations	<a href="mailto:public_relations@glendaleheights.org">public_relations@glendaleheights.org</a> 630.909.5350
Public Works	<a href="mailto:public_works@glendaleheights.org">public_works@glendaleheights.org</a> 630.260.6040
Water Billing	<a href="mailto:waterbilling@glendaleheights.org">waterbilling@glendaleheights.org</a> 630.260.6010

#### IMPORTANT COMMUNITY PHONE NUMBERS

Police/Fire/Ambulance Emergency	911
Adventist GlenOaks Hospital	630.545.8000
AT&T U-Verse	800.288.2020
Bloomington Fire Protection District 1 (Non-emergency)	630.894.9080
Bloomington Township (Administrative offices)	630.529.7715
Clarke Environmental (Mosquito Control Hotline)	800.942.2555
Comcast (Cable/Internet)	866.594.1234
Commonwealth Edison (Electric utility)	800.334.7661
DuPage County (Administrative offices)	630.407.6500
Glendale Heights Chamber of Commerce	630.909.5361
Glenside Fire Protection District (Non-emergency)	630.668.5323
Glenside Public Library District	630.260.1550
J.U.L.I.E. (Call Before You Dig!)	800.892.0123
Milton Township (Administrative offices)	630.668.1616
NICOR (Gas utility)	888.642.6748
Republic Services (Refuse/Recycling Services)	847.981.0091
United States Post Office	800.275.8777
WideOpenWest (Cable/Internet)	866.496.9669

### Connect With Us

Keep up-to-date with Village events and announcements by following us on Twitter @VOGHNews, liking us on Facebook at VOGHNews, or viewing our YouTube page at GlendaleHtsTV!

If you have a smartphone with a camera and a QR code/scanner app, simply scan these quick response codes to go directly to our Twitter, Facebook or YouTube pages!



Twitter



Facebook



YouTube



### Let us know!

The purpose of this column is to provide a way in which you can communicate with the Village President, Board of Trustees and Village Departments. Your advice, suggestions and questions are appreciated and will receive a response. A response cannot be provided unless you include your name and address.

**Mail to:** Newsletter Feedback  
 Village of Glendale Heights  
 Attn: Public Relations  
 300 Civic Center Plaza  
 Glendale Heights, IL 60139

**Email to:** [public\\_relations@glendaleheights.org](mailto:public_relations@glendaleheights.org)

Suggestions, questions and comments \_\_\_\_\_

\_\_\_\_\_  
 \_\_\_\_\_  
 \_\_\_\_\_

Name: \_\_\_\_\_

Address: \_\_\_\_\_

Phone: \_\_\_\_\_

Email Address: \_\_\_\_\_

Please check if you prefer to keep your name confidential.